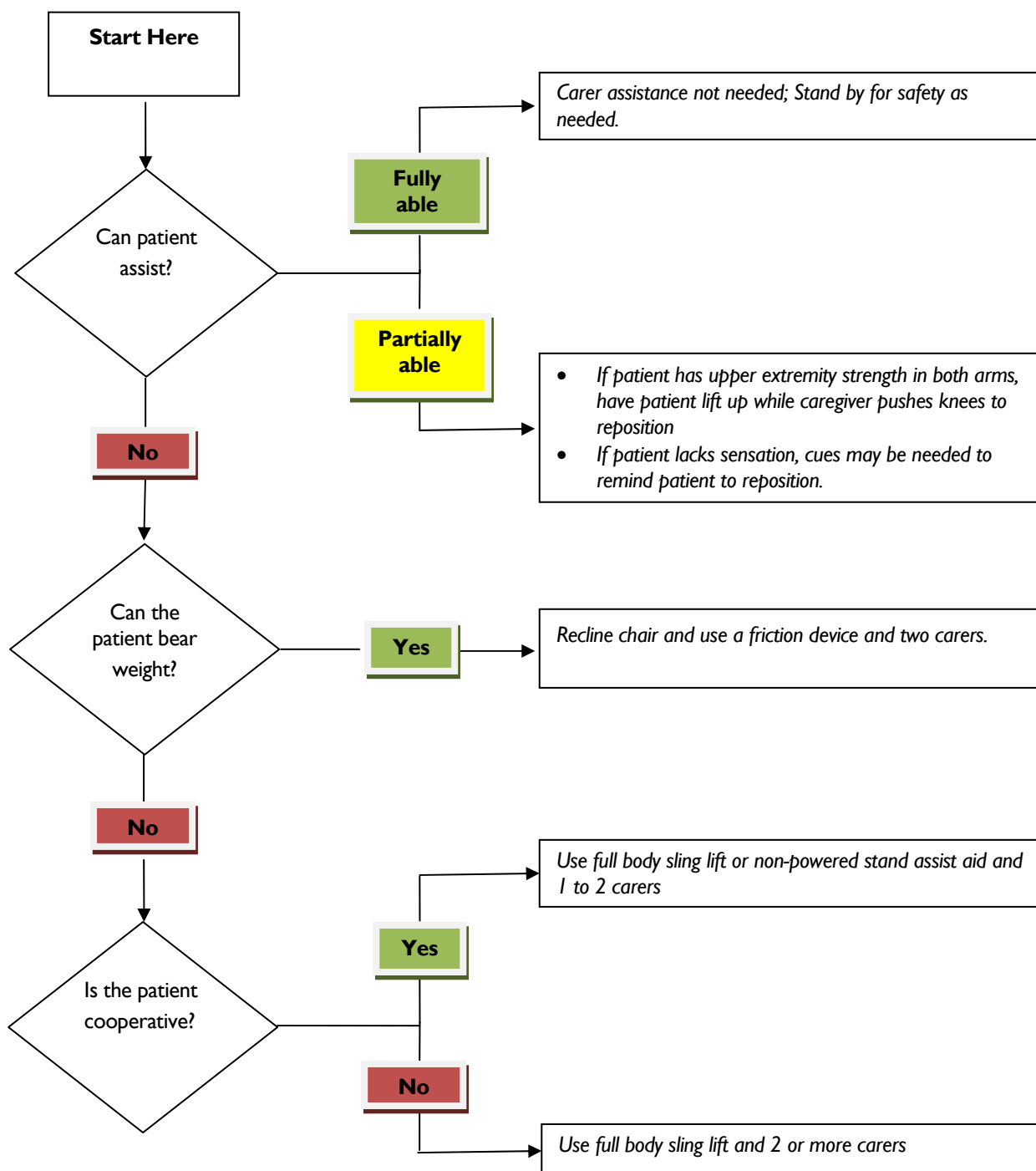


Algorithm 5: Reposition in Chair: Wheelchair and Dependency Chair

Last rev. 23/08/05



- Take full advantage of chair function, e.g., chair that reclines, or use arm rest of chair to facilitate repositioning.
- Make sure the chair wheels are locked.
- During any patient transferring task, if any carer is required to lift more than 35lbs/16kg. of a patient's weight, then the patient should be considered to be fully dependent and assistive devices should be used.

Reproduced by kind permission of Audrey Nelson.

Note that we have used the original document but changed the terminology where appropriate, for instance adding weights in Kilograms to the originally shown Pounds. **Developed By:** VISN 8 Patient Safety Center | 1605 N. Nebraska Avenue 673/118M Tampa, FL 33612-5738 <http://www.visn8.med.va.gov/patientsafetycenter/> **Center Director:** Audrey Nelson, PhD, RN, FAAN