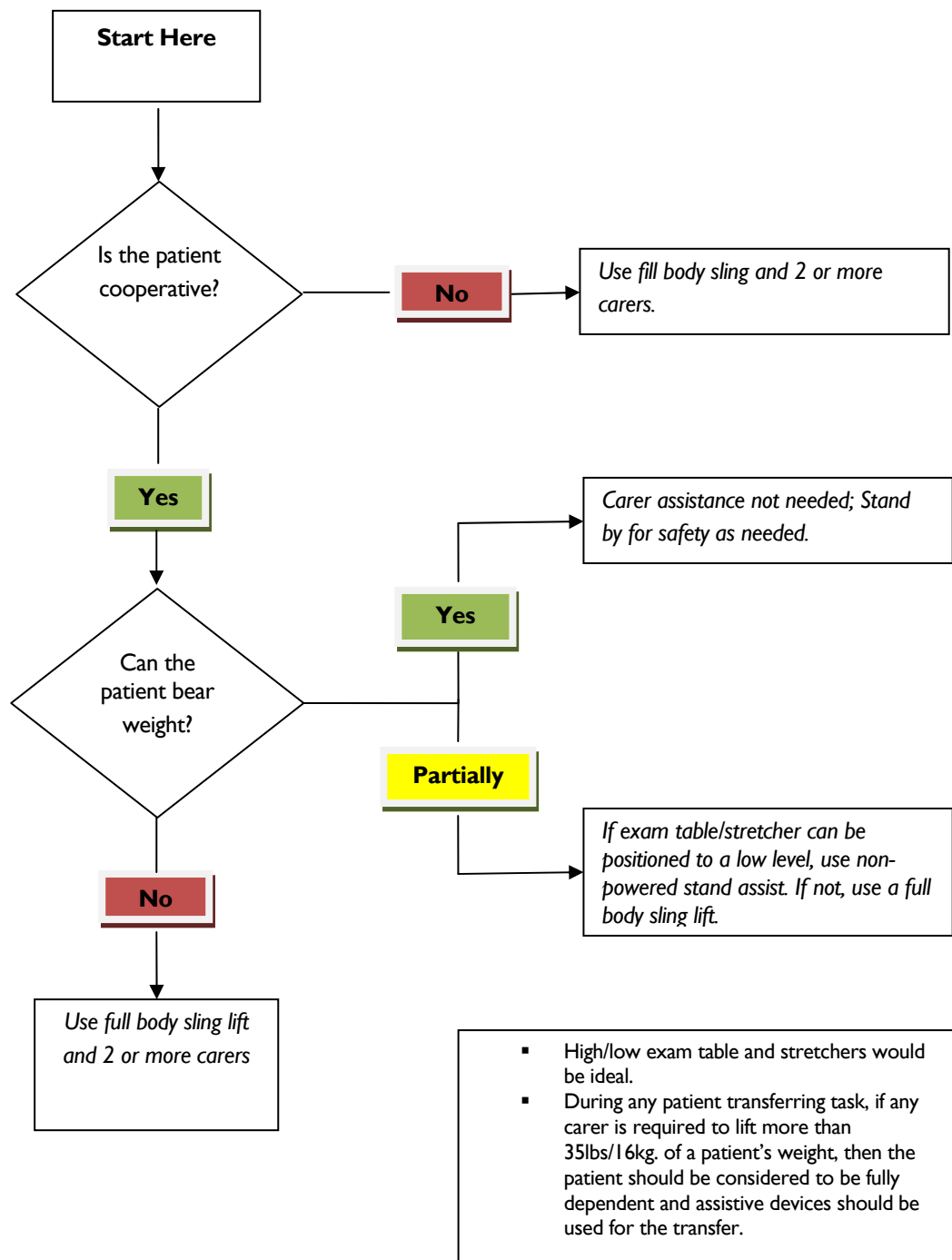


### Algorithm 3: Transfer To and From: Chair to Stretcher or Chair to Exam Table

Last rev. 01/04/05



Reproduced by kind permission of Audrey Nelson.

Note that we have used the original document but changed the terminology where appropriate, for instance adding weights in Kilograms to the originally shown Pounds

**Developed By:**

VISN 8 Patient Safety Center 11605 N. Nebraska Avenue 673/118M Tampa, FL 33612-5738

<http://www.visn8.med.va.gov/patientsafetycenter/>

**Center Director:** Audrey Nelson, PhD, RN, FAAN